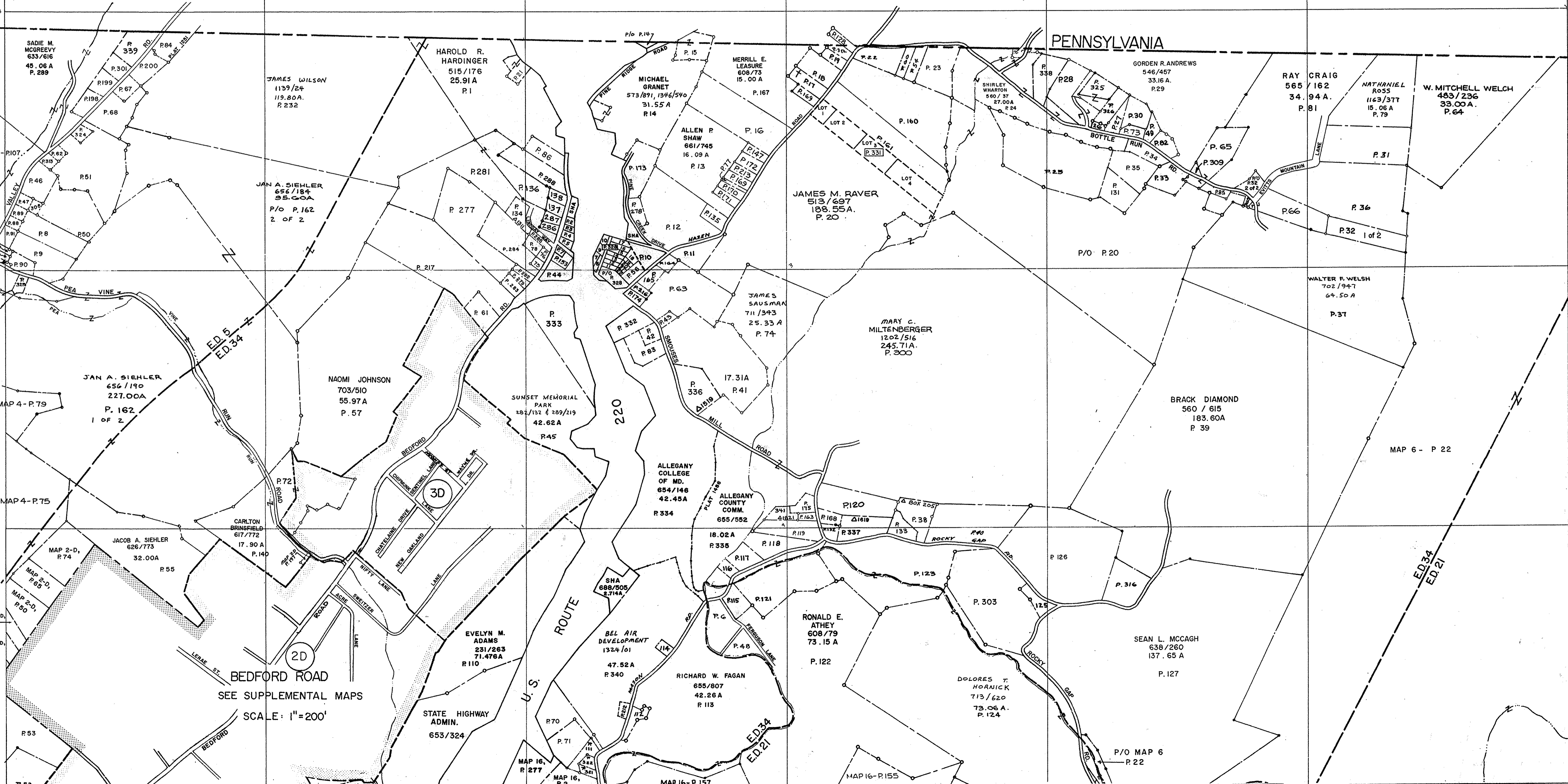


PENNSYLVANIA



SADIE M. MCGREEVY
633/616
45.06 A
P. 289

JAMES WILSON
1139/24
119.80A.
P. 232

HAROLD R. HARDINGER
515/176
25.91A
P. 1

MICHAEL GRANET
573/891, 1346/540
31.55 A
P. 14

MERRILL E. LEASURE
608/73
15.00 A
P. 167

ALLEN P. SHAW
661/745
16.08 A
P. 13

JAMES M. RAVER
513/697
188.55A.
P. 20

GORDEN R. ANDREWS
546/457
33.16 A.
P. 29

RAY CRAIG
565/162
34.94 A.
P. 81

NATHANIEL ROSS
1163/377
15.06 A
P. 79

W. MITCHELL WELCH
483/236
33.00 A.
P. 64

JAN A. SIEHLER
656/184
95.00A
P/O P. 162
2 OF 2

R. 277

R. 288

R. 333

JAMES SAUSMAN
711/343
25.33 A
P. 74

MARY C. MILTENBERGER
1202/516
245.71A.
P. 300

WALTER F. WELSH
702/947
64.50 A
P. 37

JAN A. SIEHLER
656/190
227.00A
P. 162
1 OF 2

NAOMI JOHNSON
703/510
55.97A
P. 57

SUNSET MEMORIAL PARK
282/192 & 289/219
42.62A
R. 45

ALLEGANY COLLEGE OF MD.
654/146
42.45A
R. 334

ALLEGANY COUNTY COMM.
655/552
18.02 A
P. 335

BRACK DIAMOND
560/615
183.60A
P. 39

MAP 6 - P 22

JACOB A. SIEHLER
626/773
32.00A
P. 55

CARLTON BRINSFIELD
617/772
17.90 A
P. 140

EVELYN M. ADAMS
231/263
71.476A
P. 110

BEL AIR DEVELOPMENT
1324/01
47.52 A
R. 340

RICHARD W. FAGAN
655/807
42.26 A
P. 113

RONALD E. ATHEY
608/79
73.15 A
P. 122

SEAN L. MCCAGH
638/260
137.65 A
P. 127

DOLORES T. HORNICK
713/620
73.06 A.
P. 124

2D
BEDFORD ROAD
SEE SUPPLEMENTAL MAPS
SCALE: 1"=200'

STATE HIGHWAY ADMIN.
653/324

P/O MAP 6
P. 22